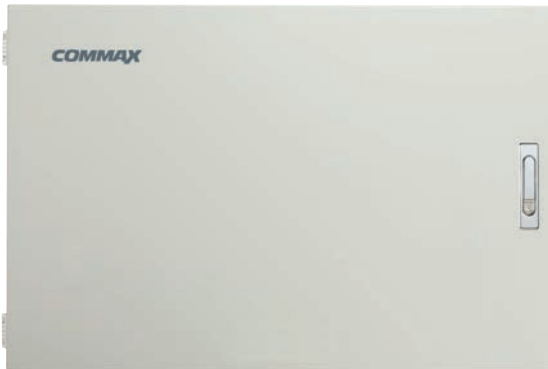


Since 1968

COMMAX
SmartHome & Security

User Manual

Digital Control Station CDS-4CM



www.commax.com

COMMAX Co.,Ltd.



- Thank you for purchasing COMMAX products.
- Please carefully read this User's Guide (in particular, precautions for safety) before using a product and follow instructions to use a product exactly.
- The company is not responsible for any safety accidents caused by abnormal operation of the product.



Table of Contents

1. Features and Function	1
2. System Layout	1
3. Wiring Diagram	2
4. Specification	2
5. Wiring method and How to use	3



Warnings and caution

◎ Make sure to follow the instructions to prevent any danger or property losses.

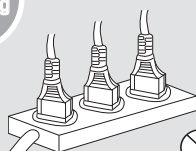


Warning Death or serious injury is expected.

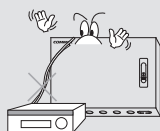
- It indicates prohibition.
- It indicates prohibition of disassembly.
- It indicates prohibition of contact.
- It indicates dos and don'ts.
- It indicates that the plug should be pulled out from the socket.



Warning



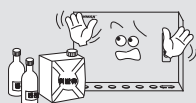
Do not put the plug in the socket simultaneously.
It may generate abnormal heat or cause a fire.



Do not connect to other products while in use.
It may cause breakdown.



Do not forcibly bend the cord or put a heavy object on the product.
It may cause a fire.



Do not use water, thinner or a detergent used to wash oil products when you wash the exterior.
Make sure to wash it by using a dry cloth to prevent any breakdown or electric shock.



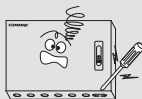
Do not install the product in a humid place.
It may cause an electric shock or a fire.



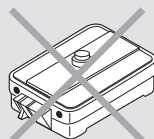
Do not forcibly pull out the cord from the socket.
If the cord is damaged, it may cause a fire or an electric shock.



Do not put the plug in the socket with a wet hand.
It may cause an electric shock.



Do not disassemble, repair or modify the product.
It may cause a fire, an electric shock or an injury due to malfunction of the product.



Do not use AC circuit breaker.
It may cause an electric shock.



Warnings and caution



Caution

An injury or property losses are expected



It indicates prohibition.



It indicates prohibition of disassembly.



It indicates prohibition of contact.



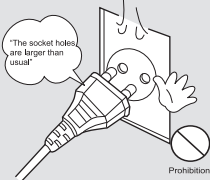
It indicates dos and don'ts.



It indicates that the plug should be pulled out from the socket.

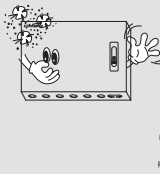


Warning

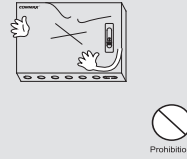


If the socket holes are larger than normal, do not put the plug.

It may cause an electric shock or a fire.

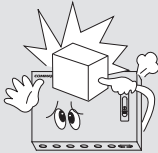


Make sure that dust or foreign substances are not gathered on the product.



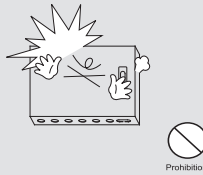
Make sure to prevent foreign substances from entering the product.

It may cause a breakdown.

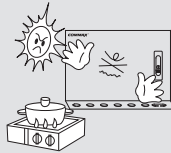


Do not put a heavy object on the product.

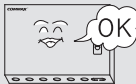
It may cause a breakdown.



Do not disassemble or give an impact to the product.

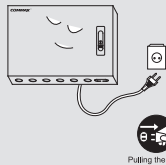


Avoid direct rays of the sun or heating devices at a time of installation.

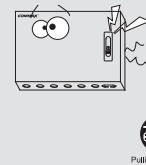


Install the product in a flat and stable place.

Otherwise, it may not function properly.



Pull the plug if the product is not used for a long time.



If the product generates strange sound, make sure to pull the plug immediately and contact Commax service center.



1. Features and Functions

1. Features

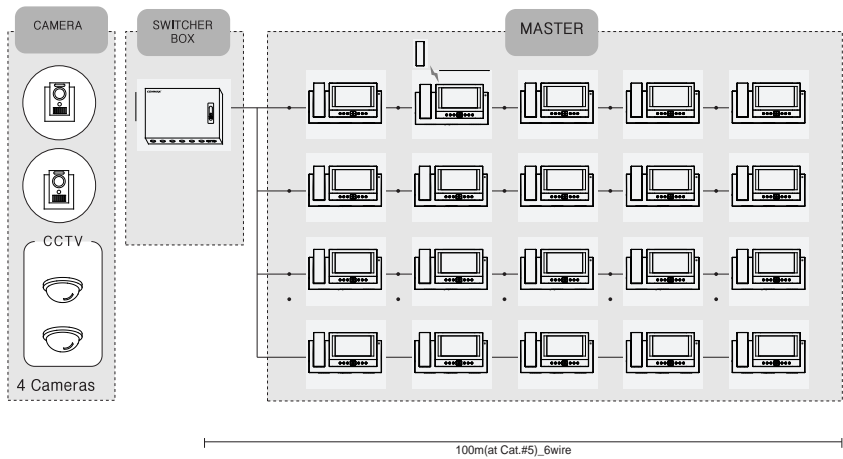
- Flush mouth type Digital Control Station
- Free Voltage power supply
- To be interfaces up-to 4th cameras
- To be interfaces up-to 20th monitors

2. Function

- Working with CAV-71B/72B
- Working with Alarm Sensor

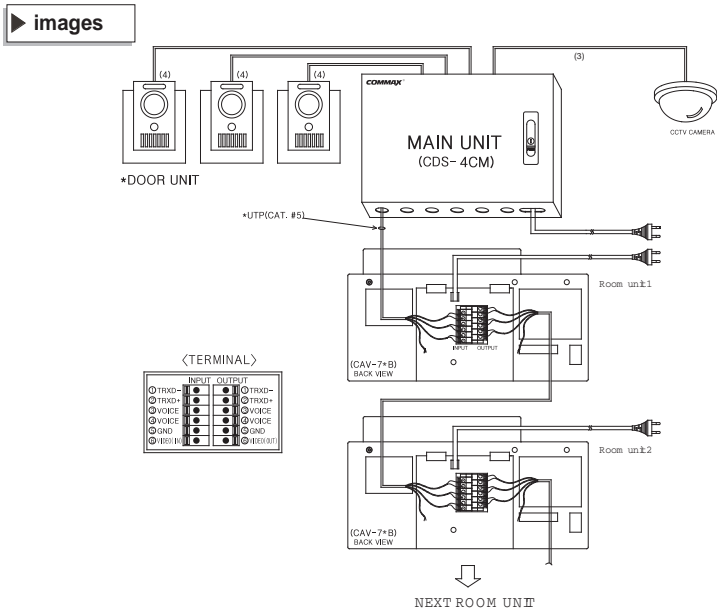


2. System Layout



- Maximum connect with up-to 4th cameras *Available to connect with CCTV camera
- Maximum connect with up-to 20th monitors

3. Wiring Diagram



- Notes for connecting
 - .Maximum number per line from the slave connection terminal of main unit is 5.
 - .Please connect wiring terminal carefully on polarity.
 - .Please use UTP (CAT. 5) for cable and 14~24AWG for others.

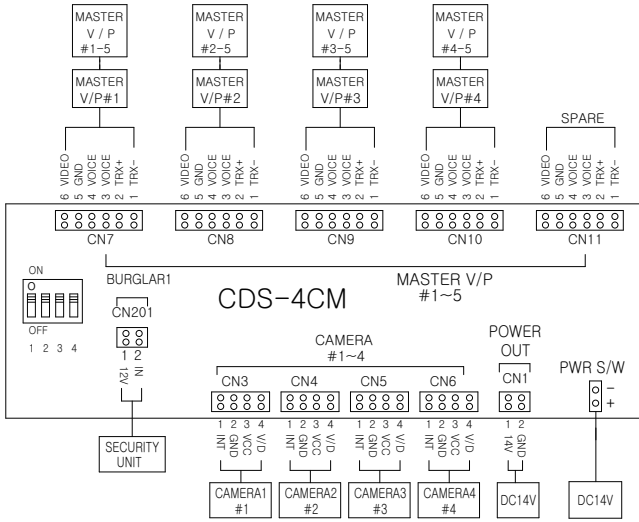
4. Specification

Model	CONTENTS(CDS-4CM)
ITEM	
Transmission	2 wires, 4wires at Entrance, 6wires at MASTER Unit
Rated voltage	14V ≒
Power consumption	On standby : 100mA, On operating : 250mA
Telephone Conversation Distance	Entrance: 28m(CAT#5 cable) MASTER Unit : 20m(0.65 cable, Video-out 3C2V Coaxial cable)



5. Wiring Method and How to use

► Wiring



1. Wiring Method

- As the maximum, five Master-V/Ps can be connected with 1 line which is a master connection terminal of main unit.
 - The maximum 20 sets of Master-V/P can be connected with 1 main unit.
- In case of wiring between two Master-V/Ps, an video cable must be connected as a VD/IN and VD/OUT pair.
- Be careful of connection, as it is polarized cables.
 - In case of wrong connection, a video phone in a household shall not operate.
- Master ID (household video phone) must be input, unless master ID input, it shall not operate properly.

2. How to use

- In case of normal connection, it shall be connected with power cord, and then, turn on the power switch.
- LED shall operate, if power is on.
- Refer CAV-71B/72B user guide for another operation method.
- DIP S/W shall be in accordance with the number of a camera connection.
 - If three cameras connected, DIP S/W shall turn on 1, 2 and 3 switches.

COMMAX

COMMAX Co.,Ltd.

513-11, Sangdaewon-dong, Jungwon-gu, Seongnam-si, Gyeonggi-do, Korea

Int'l Business Dept. Tel. : +82-31-7393-540~550 Fax. : +82-31-745-2133

Web site : www.commax.com

PM044CM00010

Printed In Korea / 2011.08.104